



PRODUCT BROCHURE

Provide Flexible and Effective Energy
Solutions for Global Partners



Anhui Lvwo Energy Technology Co., Ltd.

ABOUT US

安徽绿沃循环能源科技有限公司

Lwvo Energy Technology Co., Ltd is a high-tech enterprise specializing in the R&D, production, sales of LiFePO4 cells and PACK assembly and energy storage system.

Battery Packs produced by Lwvo Energy are widely used in Home energy storage systems, industrial and commercial energy storage systems, lead-acid replacement, UPS power, intelligent battery swapping stations, communication backup power, portable power supply, solar street lights, energy storage systems and other essential fields.

Our company fully supports the exclusive customization of battery packs for precisely meeting your diverse needs.



1600+

Experienced Staff



260km²

Industrial Park



522+

Product Patents



Lwvo Energy industrial park covers an area of more than 400 acres (over 260,000 square meters). The industry chain includes positive electrode materials, negative electrode materials, steel shells, caps, diaphragms, LiFePO4 cells, PACKs, big data centers, intelligent battery swapping stations, BMS, soft connectors, wiring harnesses, sheet metal, hardware, new energy compartments, cardboard boxes, as well as operation platforms and scientific research institutes associated with new energy batteries.



Scan QR code, VR visit

材料安全数据表
Material Safety Data Sheet

样品名称: 磷酸铁锂电池
Sample name: LiFePO4 Battery
样品型号: S1.2V280Ah
Sample model: S1.2V280Ah
申请人: 安徽绿沃循环能源科技有限公司
Applicant: Anhui Lwvo Recycling Energy Technology Co., Ltd.

UN38.3 检测报告
UN38.3 Test Report

样品名称: 磷酸铁锂电池
Sample name: LiFePO4 Battery
样品型号: S1.2V280Ah
Sample model: S1.2V280Ah
委托单位: 安徽绿沃循环能源科技有限公司
Applicant: Anhui Lwvo Recycling Energy Technology Co., Ltd.

家庭储能解决方案

Residential ESS Solution

住宅储能系统设计非常紧凑，以节省空间。这些系统使用能量密度高、寿命长、重量轻、易于安装等优势的磷酸铁锂电池。

Residential energy storage systems are designed to be very compact to save space. The systems use lithium-ion batteries and have the advantages of high energy density, long life, light weight and easy installation.



家庭储能
Home Energy Storage

光伏系统
Photovoltaic System

备用电源
Backup Power



绿沃自主研发的住宅储能系统通过与太阳能可再生能源高效结合，实现家庭电力的智能存储与精细化管理，为用户提供稳定可靠的持续供电。公司提供多元化产品矩阵，涵盖壁挂式、堆叠式及一体式等多形态住宅储能解决方案，精准适配多样化家庭能源场景需求。

The device can be combined with renewable energy to achieve the storage and management of household electricity and provide users with a stable and reliable power supply. The available options encompass a wide range of styles and models, including wall-mounted, stacked, and all-in-one residential energy storage solutions.

RES

家储电池可兼容 市面上 大多数逆变器品牌

Compatible With Multiple Inverter Brands



针对其他品牌逆变器，绿沃专业工程师团队可依据客户提供的具体通讯协议，快速响应并为客户提供定制化调试服务，确保储能系统与逆变器实现高效匹配及无缝兼容。

For inverters of other brands, our excellent engineers can provide corresponding debugging services and match them for compatibility based on the specific communication protocols provided.

规格 Specifications		单位 Units
型号 Model	LW-X15KWh-HM	
额定能量 Nominal Energy	14.33	kWh
额定容量 Nominal Capacity	280	Ah
额定电压 Nominal Voltage	51.2	V
工作电压 Operating Voltage	40 ~ 58.4	V
最大充电电流 Maximum Charging Current	150	A
最大放电电流 Maximum Discharging Current	200	A
串联数量 Series Quantity(sets)	16	
安装方式 Installation Method	Movable	
电池类型 Battery Type	LiFePO4	
通讯方式 Communication	CAN / RS485	
循环寿命 Cycle Life	≥ 5000@25 °C,0.5c	
工作温度范围 Operating Temperature Range	充电 Charging: 0°C ~ 55°C 放电 Discharge: -20°C ~ 55°C	
储存温度 Storage Temperature	-20 ~ +45	°C
相对湿度 Relative Humidity	5 ~ 95	%RH
工作海拔 Working Altitude	≤ 3000	m
防护等级 Ingress Protection Level	IP65	
冷却方式 Cooling Method	Natural cooling	
净重 Net Weight	109.5	kg
产品尺寸 Product Dimensions(W*H*D)	881*480*251	
型号 Model	51.2V100Ah (5KWh)	51.2V 200Ah (10KWh)
额定电压 Rated voltage	51.2	
电池系统电压范围 Battery pack voltage range	40 ~ 58.4	
额定容量 Rated capacity	100	200
总能量 Total energy	5120	10240
串并联连接方式 Combination	16S1P	16S2P
电池包数量 Battery packs quantity	1	
循环寿命 Cycle life	>6000	
最大充电功率 Max. charging power	5	5 / 10
最大放电功率 Max. discharging power	5	5 / 10
MPPT 电压范围 MPPT voltage range	60 ~ 145VDC	
通讯模式 Communication mode	CAN0/RS485	
电池包尺寸 Battery box dimension	455*670*170	
IP 防护等级 IP Level	IP55	
电池箱重量 Battery box weight	41	76

Home energy storage systems are designed to be very compact to save space. The systems use lithium-ion batteries and have the advantages of high energy density, long life, light weight and easy installation.



Model1 LW-5KWh-HS

Home Energy Storage System

The device can be combined with renewable energy to achieve the storage and management of household electricity and provide users with a stable and reliable power supply.

The available options encompass a wide range of styles and models, including wall-mounted, stacked, and all-in-one home energy storage solutions.

Specifications	5KWh	10KWh	15KWh
Model			
Dimensions (W*D*H)	505.5*230*825mm	505.5*230*1185mm	505.5*230*1545mm
Ingress Protection Level	IP54		
Cooling Method	Natural Cooling		
Installation	Floor-standing Installation		
Battery Type	Lithium Iron Phosphate		
Battery Configuration	16S1P		
Nominal Voltage (V)	51.2		
Nominal Capacity (Ah)	100		
Charging Voltage (V)	58		
Communication	CAN&RS485		
Weight (kg)	67	117	167

Compatible with multiple inverter brands



Model2 LW-X15KWh-HM

Home Energy Storage System

Model	LW-X15KWh-HM
Nominal Energy	14.33kWh
Nominal Capacity	280Ah
Nominal Voltage	51.2V
Operating Voltage	40-58.4V
Maximum Charging Current	150A
Maximum Discharging Current	200A
Series Quantity(sets)	16
Installation Method	Movable
Battery Type	LiFePO4
Communication	CAN/RS485
Cycle Life	≥5000@25°C,0.5C
Operating Temperature Range	Charge: 0°C~55°C Discharge: -20°C~55°C
Storage Temperature	-20°C~+45°C
Relative Humidity	5~95%RH
Working Altitude	≤3000m
Ingress Protection Level	IP65
Cooling Method	Natural cooling
Net Weight	109.5kg
Product Dimensions (W*H*D)	881*480*251mm

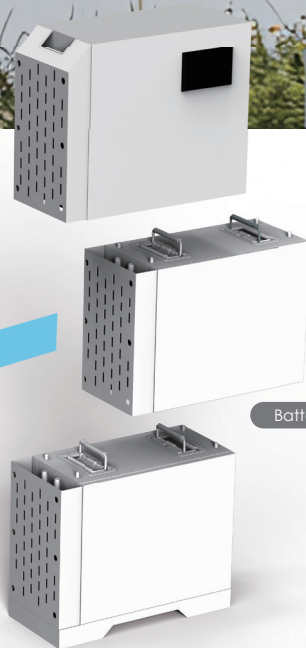
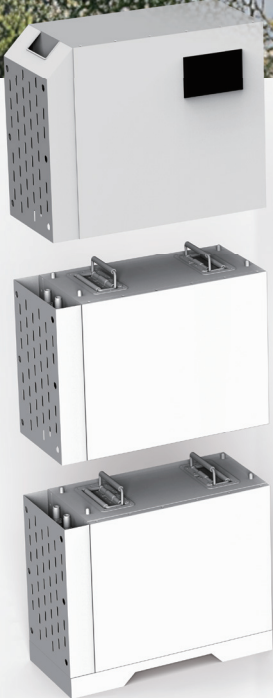
* The temperatures mentioned above are limited to the BMS ranges, such values may not be covered by the performance warranty. We recommend contacting Lwwo Energy for the latest date datasheet, manual before making any purchasing decisions. Images herein are for demonstration only and may not reflect final product outlook. Confirm current data with Lwwo Energy before purchase.



Diverse installation methods meet the layout needs of various families.



Inverter



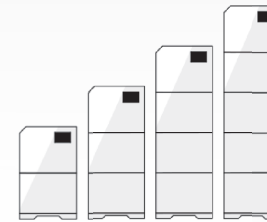
Battery Pack

LW-5KWh-HS

Wall-Mounted: Space-Saving

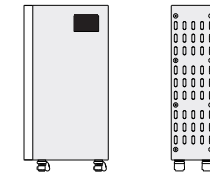


Stacked: Easy Expandability



LW-X15KWh-HM

Floor-Standing: Flexible Mobility



For inverters of other brands, our excellent engineers can provide corresponding debugging services and match them for compatibility based on the specific communication protocols provided.

3
electrical appliances
in use...

LW-10kWh-HS
30%

LW-X15kWh-HM
75%

Home

Backyard

1 Flow

2 Flow



Smart Home Energy System

one in all

Remaining power
75%

Date

1.25 Load

Initial 1.94 **2.31** Market 2.51

Current